



# PYRAWALL<sup>®</sup>

*Engineered Vegetated Wall System*



## ***Engineered Vegetated Wall System<sup>™</sup>***

PYRAWALL is a vegetated solution for constructing reinforced soil walls and steepened slopes. The system consists of PYRAMAT<sup>®</sup> 75 High Performance Turf Reinforcement Mat (HPTRM) and fiber-composite internal bracing. Featuring flexible setback and alignment, PYRAWALL can be customized to unique site conditions.

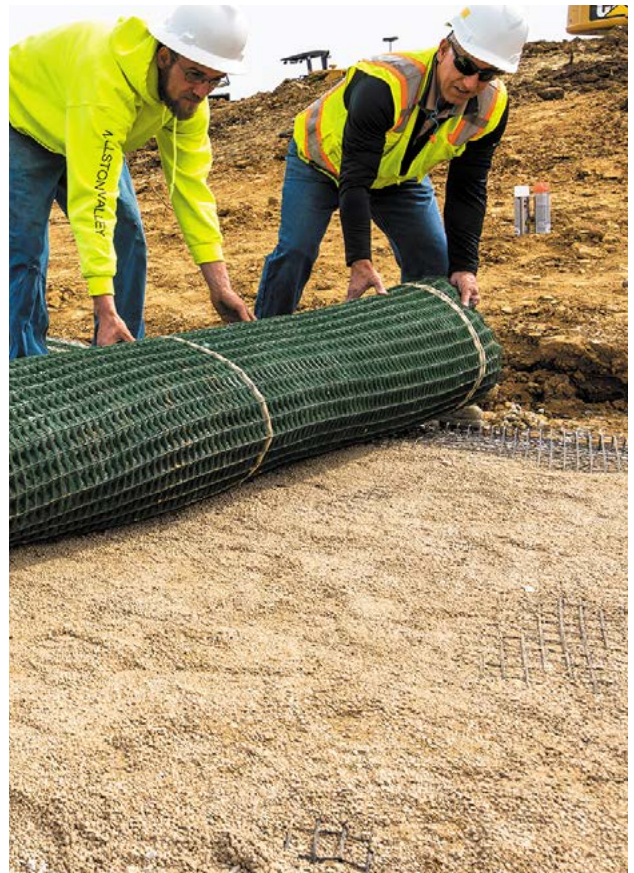
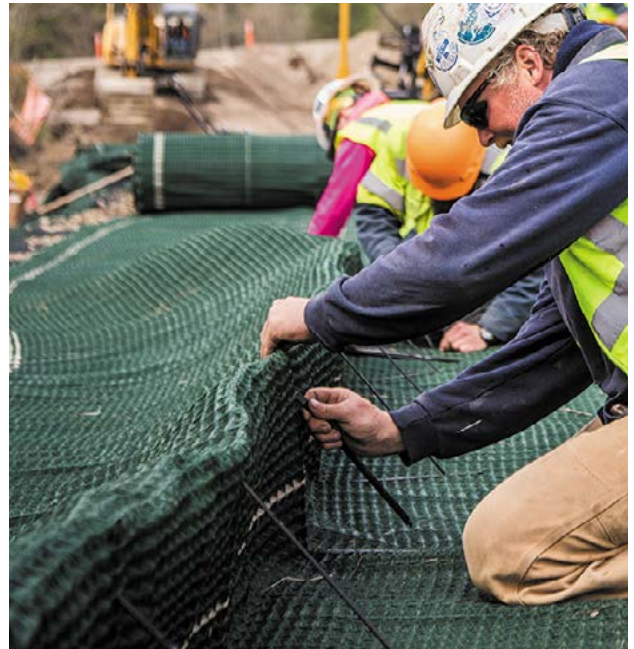


# PYRAWALL<sup>®</sup>

*Engineered Vegetated Wall System*

## **Features & Benefits**

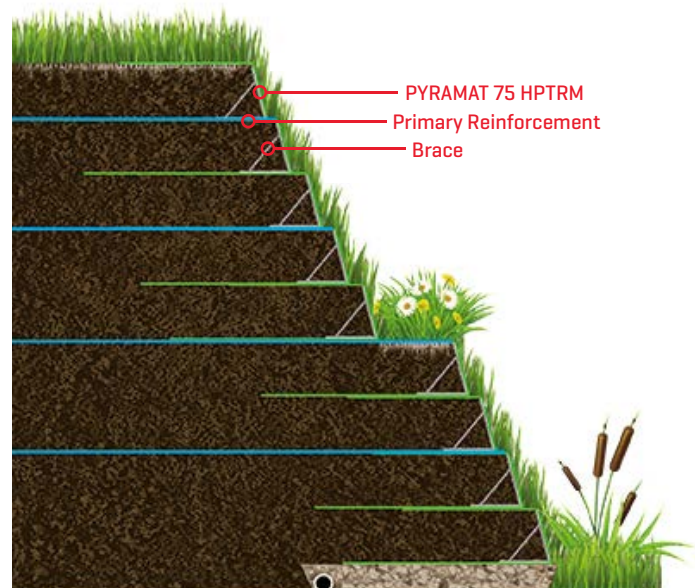
- Internal bracing provides superior material connection and system performance
- Produces reinforced soil mass to resist lateral earth pressures and provides immediate erosion protection upon installation
- Is a vegetated Best Management Practice solution for NPDES Storm Water Compliance
- Superior UV resistance for up to 75 years of design life
- Eliminates the need for temporary metal bracing, metal wrap face, or removable forms to improve installation efficiency
- Flexibility of product allows for curves to be incorporated along the wall or slope alignment
- Provides durable, permeable and vegetated wall face for long-term performance and aesthetics
- Components are environmentally inert and not susceptible to corrosion
- On-site soil can be used for infill eliminating the cost and carbon footprint of importing soil
- System is easily transported making it ideal for sites that are difficult to access
- Can support a handrail or fence
- For wall heights greater than 7 feet and/or more challenging site conditions, primary reinforcement can be incorporated
- Patented Trilobal X3<sup>®</sup> Fiber Technology helps lock in seeds and promote rapid root mass development
- Vegetative live stakes, seedlings or small plants can be inserted into or cut into the face of the wall
- Available in Green or Tan





## Applications

- Wrapped-face Mechanically Stabilized Earth (MSE) Structure
- Reinforced Soil Slopes (RSS)
- Streambank Stabilization
- Landslide remediation
- Vegetated facing for soil-nail or ground-anchored slope
- Landscaping enhancements for residential and commercial properties
- Wing walls for Geosynthetic Reinforced Soil – Integrated Bridge System (GRS\_IBS)





# GEO DESIGN<sup>®</sup>

See how **PYRAWALL** can support your next project. Check out **GeoDesign**, our online design tool for evaluating our Engineered Earth Armoring Solutions. Visit [PropexGlobal.com/Geo-Design](http://PropexGlobal.com/Geo-Design).

Contact our Engineering Services Team Hotline at **423.553.2465** or email [GeoEngineering@PropexGlobal.com](mailto:GeoEngineering@PropexGlobal.com) to let us help you with your next project.



[PropexGlobal.com](http://PropexGlobal.com) | 800 621 1273 | [f](#) [t](#) [in](#) [y](#)

