

GREYTER HARVEST AND WATER REUSE SYSTEMS

We've partnered with Greyster to offer water harvesting, reuse and treatment systems utilizing customized designs to meet your projects' unique site requirements.

WHAT ARE GREYTER SYSTEMS?

Greyster has developed six modular subsystems that can be combined and scaled to support the water harvesting and reuse goals for any application.

These subsystems include:



PUMP STATION

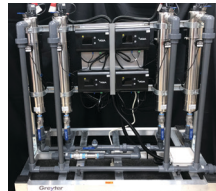
FILTER MODULE

TANNIN MODULE

UV MODULE

CHLORINATION MODULE

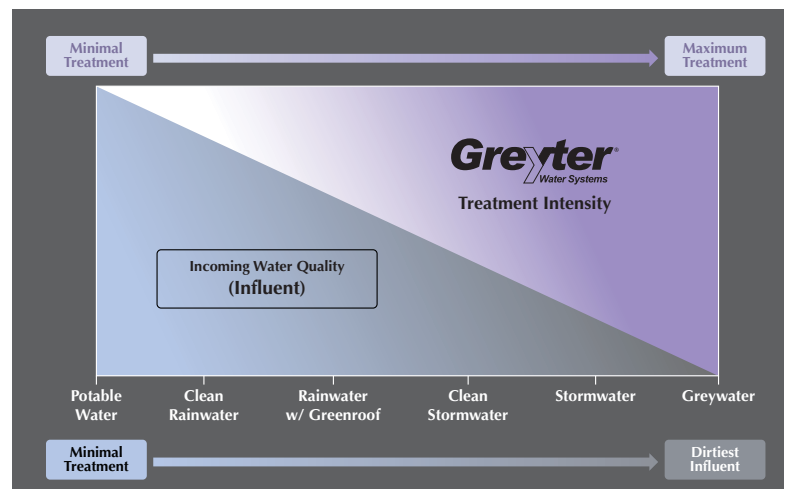
DAY STORAGE



HOW CAN FERGUSON HELP?

Once regulatory prefiltration requirements and necessary storage volume are calculated and provided using Ferguson geo and stormwater products, our team works with Greyster to determine the water treatment intensity by assessing the incoming water quality and desired reuse application.

We work with you at any point in your project's lifecycle. The Ferguson/Greyster team can provide engineering specification and system design support, system production, installation support, commissioning, training, service and maintenance.



Contact your local Green Stormwater Infrastructure Specialist or visit fergusongss.com

HOW IT WORKS

Contact your local Green Stormwater Infrastructure Specialist or visit fergusongss.com

1

INCOMING WATER

Our solutions enable reuse of stormwater, rainwater and gray water.



2

FILTRATION/SCREENING

Removing solids is a key component of protecting the system. Ferguson offers a wide variety of filters and screens to trap trash and debris, sediment and other pollutants of concerns based on maintenance goals and regulatory stormwater treatment requirements.

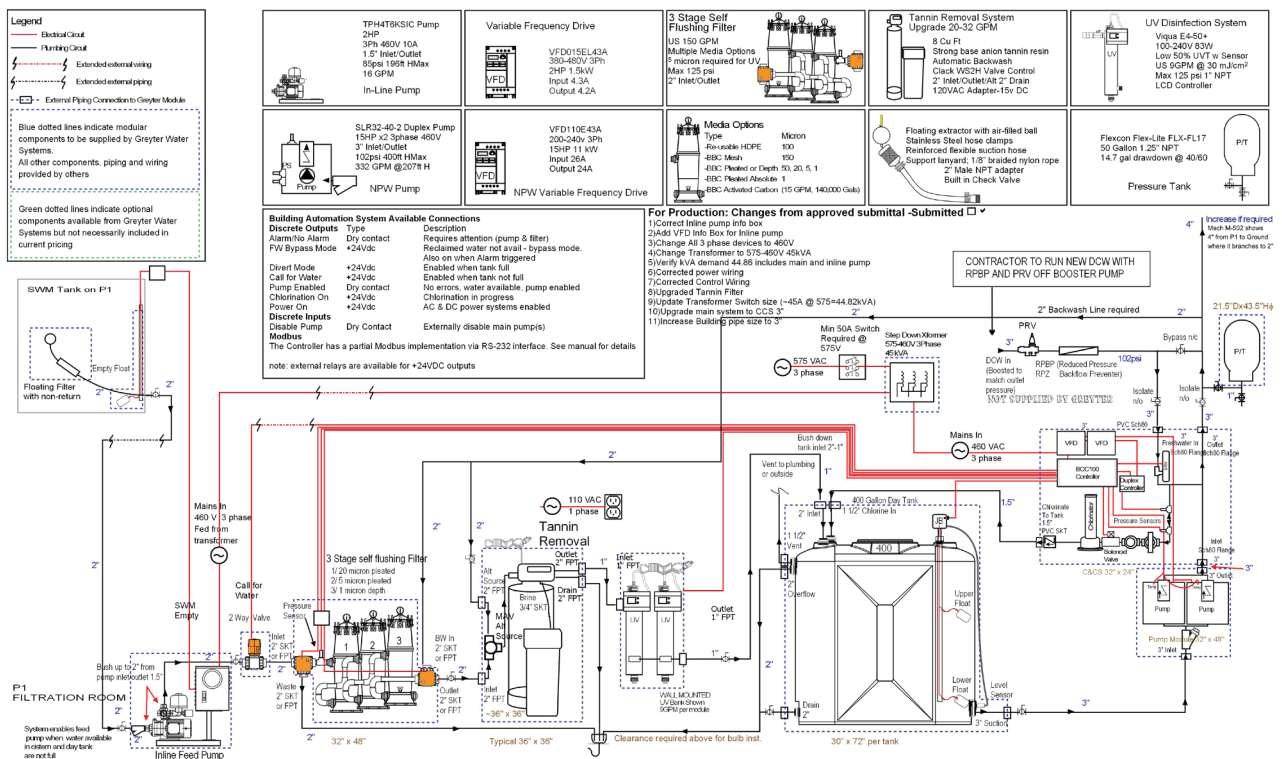


3

TREATMENT

Greyter's modular approach to treatment allows strict alignment with site goals, reducing product and operational costs associated with unnecessary treatment.

MONITORING | FILTRATION | DISINFECTION | DIVERSION | DISTRIBUTION



USE APPLICATION

With a variety of treatment options available, Greyter systems support a wide range of applications.

- Irrigation
- Toilets
- Infiltration beds
- Splash pads
- Cooling towers
- Trap seal priming
- Equipment washing